



SMART

Your train has arrived.

Sonoma-Marín Area Rail Transit District

General Manager's Report – June 2019

5401 Old Redwood Highway, Suite 200

Petaluma, CA 94954

Tel: (707) 794-3330

Fax: (707) 794-3037

www.SonomaMarinTrain.org



SMART

|| SONOMA-MARIN AREA RAIL TRANSIT

SAFETY AND SECURITY

Pedestrian and Bicyclist Incidents in Rohnert Park

Two pedestrians were struck by SMART trains in a two-day period at the Golf Course Drive at-grade crossing in Rohnert Park, and our hearts go out to the families and to everyone involved, including our engineers and conductors.

On June 27, at 7:48 a.m., a woman went under the crossing gate arms, and was struck by a train. The train engineer reported seeing the woman go under the gate arms, on the north side of Golf Course Drive into the path of the train. The engineer sounded the horn and activated the emergency brake. The woman made no attempt to turn around or get out of the way. Rohnert Park Police believe the woman was among a group of homeless campers on Redwood Drive, and she had been warned in the past by SMART code compliance officers to stay away from the railroad tracks. All warning devices, including the crossing gates, flashing red lights, bells and train horn were working properly.

On June 28 at 6:39 a.m. a bicyclist that was traveling west on the south sidewalk was struck by a southbound train. The train engineer reported the man was riding with his head down, with a hood over his head and what appeared to be headphones on. When the man reached the edge of the tracks, he tried to dismount his bicycle and was struck by the train. The train engineer saw the cyclist entering the intersection and immediately began sounding the horn. All warning devices, including the crossing gates, flashing red lights, bells and train horn were working properly.

After any safety-related incident, SMART sends a team to the site to conduct a thorough investigation, including our members of our Public Safety, Engineering, Signaling, and Operations, teams. We also invite members of the local jurisdictions, including law enforcement and city officials. In both these events, all of SMART's safety devices were working properly. The red flashing lights, bells and gate arms were activated, and there are stencils on the sidewalk warning people to pay attention, and watch for trains.

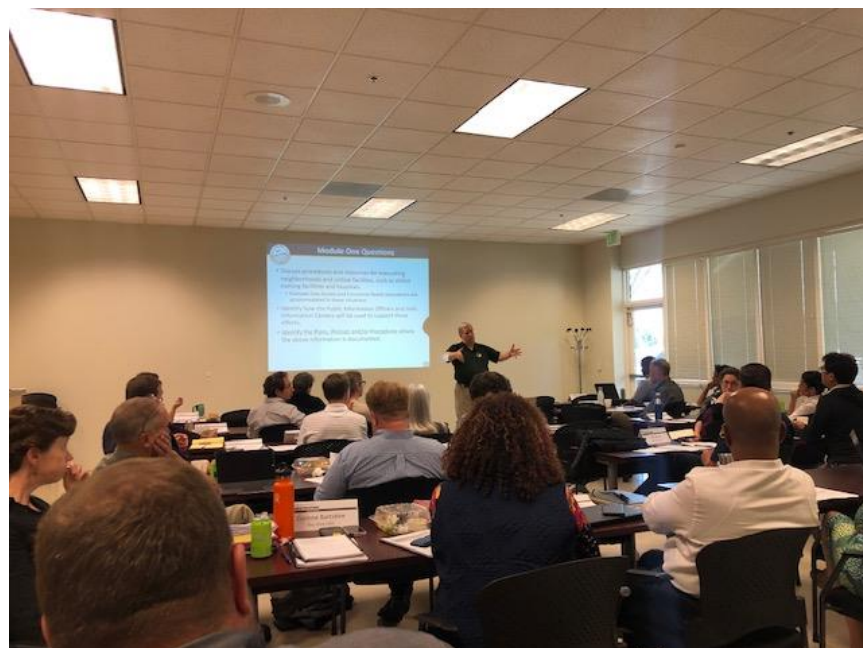
As part of its investigation, SMART always looks for any additional safety enhancements that will prompt people to pay attention to the warning devices. In late 2018, after a person wearing noise-canceling headphones walked into a path of a train, SMART did a thorough review of all 62 crossings, to see what additional enhancements could be added. Those findings were presented in SMART Board meetings, and SMART installed sidewalk stencils, designed to get people to look up and pay attention to warning devices. The SMART Board also cleared the way in May of 2019 for the addition of a total of 30 pedestrian Z-gates, which are physical barriers designed to block the path of cyclists and pedestrians, and prompt them to pay attention to warning signals. The installation of the first 17 of those gates, including Rohnert Park, is expected to be complete in the next several weeks, and the remaining 13 will follow.

We continue to ask for everyone's help, in making sure we all pay attention to these important safety warning devices, follow all safety laws, and to please be aware near all tracks and trains.



SMART hosted the North Bay Hub Critical Transportation Table Top. Attendees included: Transportation Security Administration (TSA), California Governor's Office of Emergency Services(CalOES), Bay Area Urban Area Security Initiative (UASI) Golden Gate Bridge, Highway and Transportation District (GGBHT) Metropolitan Transportation Commission (MTC) County of Marin, County of Napa, County of Solano, County of Sonoma, City of Petaluma, City of San Rafael, City of Santa Rosa, City of Sausalito, Central Marin Police Authority(CMPA), Fairfield and Suisun Transit (FAST) Marin County Office of Education (MCOE) Marin Transit Napa Valley Transit Authority (NVRTA) Solano Transportation Authority (STA) California Resiliency Alliance Kaiser Permanente and Rebuild North Bay Foundation.

The table top exercised earthquake scenarios across the North Bay.





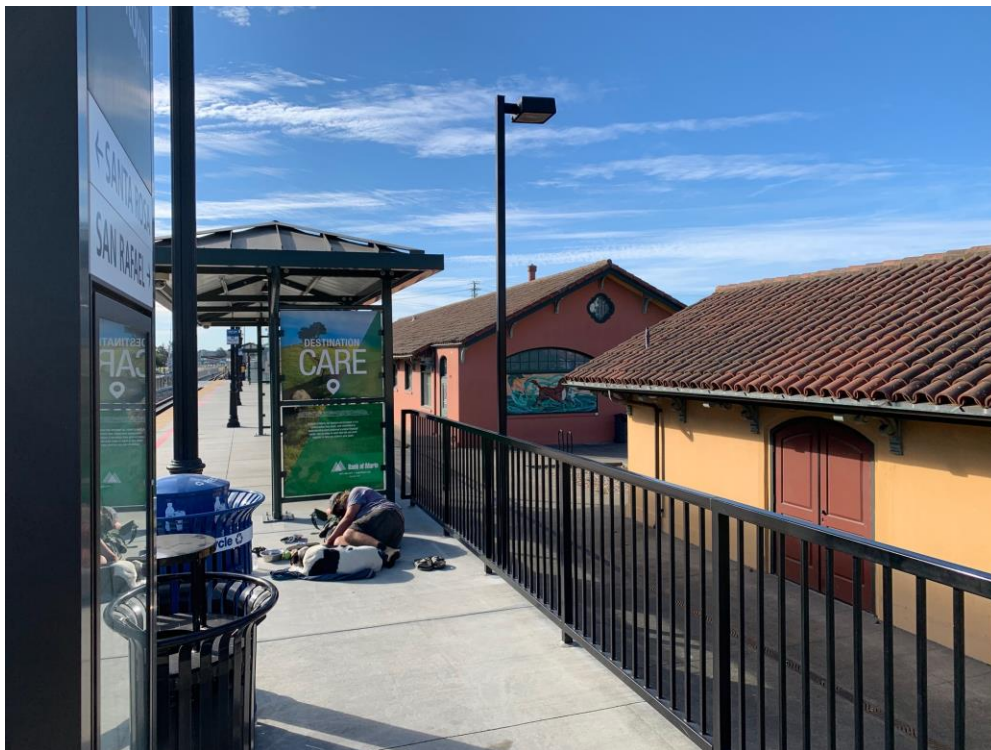
Ongoing issues with trespassers/homeless setting up camp along the pathway in Santa Rosa near 9th Street. One of the females in this group urinated on the Central Instrument Location (Signal House) with complete disregard to any public in the area.



Trespasser along the tracks in Fulton area. Refused to listen to Code Compliance.



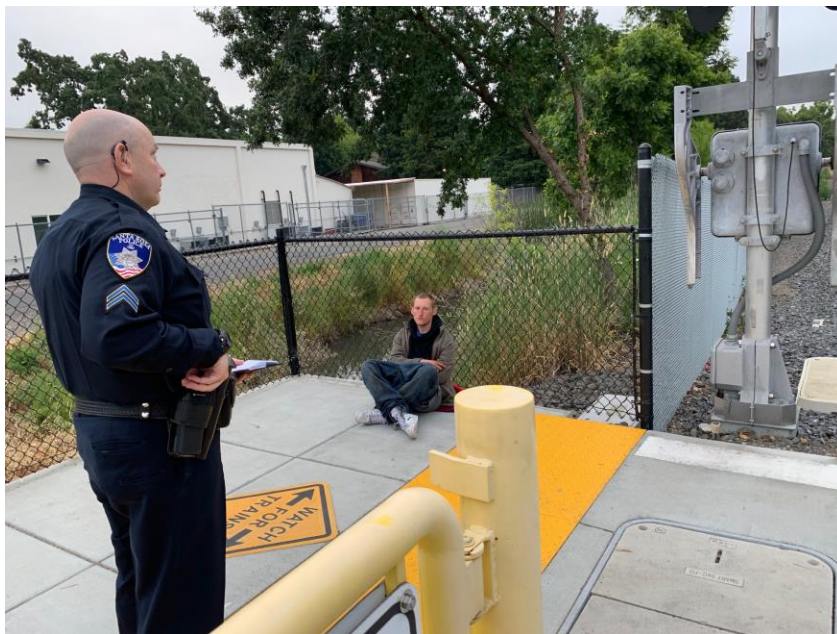
Two homeless individuals slept up against a Central Instrument Location (Signal House) in Santa Rosa. They were moved along without incident



This man and his dog were contacted sleeping on the Petaluma platform. They were moved along without incident.



This area in Rohnert Park has been a growing camp off of SMART's property, however it has been attracting homeless to travel along the tracks to get to the camp. The below trespasser was using the tracks as a pathway to their camp.



Approximately 500 yards south of the Santa Rosa North Station, code compliance noticed a trespasser walking down the tracks. Train #4 was forced to reduce their speed to almost full stop for the trespasser safety, subject displayed a reckless behavior while the train was traveling close to him. When code compliance tried to deal with the subject, he was confrontational and appeared to be under the influence of some sort of narcotics or alcohol. Santa Rosa Police arrived and arrested the suspect.

A trespasser was running down the tracks in the San Marin area for an unknown reason. Novato Police responded to the area, located the trespasser and cited him for trespassing.

COMMUNITY OUTREACH

Community Outreach | Presentations and Community Events



The Communications and Marketing department regularly participates in community events to engage with the public and provide information on SMART service, new stations, and future extensions. The Novato Art, Wine, and Music Festival took place on June 8 and 9 in Downtown Novato and SMART's outreach booth was a popular stop. Festival attendees were thrilled to hear that the Larkspur extension and the new station in downtown Novato are on schedule to be completed by the end of the year, creating new connections for the community.

SMART received a Bay Area Metro Award in recognition of its successful passenger rail service. Several SMART staff members attended the award ceremony in Oakland on June 6 and accepted the award on behalf of SMART. Thank you to the Metropolitan Transportation Commission and the Association of Bay Area Governments.



Since the last SMART Board meeting, outreach staff has participated in the following community events and presentations:

- June 28 | Sonoma Safe Routes Bike Rodeo at Meadowview Elementary School (Santa Rosa)
- June 27 | Presentation: Friends House (Santa Rosa)
- June 26 | School Safety Presentation: Learning to Learn Preschool Petaluma (Petaluma)
- June 21 | Group Trip: Learning to Learn Preschool Rohnert Park (Rohnert Park)
- June 11 | Group Trip: Hauser Academy (Santa Rosa)
- June 8 and 9 | Novato Art, Wine, and Music Festival (Novato)

Community Outreach | Safety Education and Awareness

Safety is SMART's top priority. In advance of several road closures in San Rafael scheduled during the first two weekends in June, the Communications and Marketing Department worked closely with participating entities, including Golden Gate Transit and the City of San Rafael, to coordinate safety messaging and notifications for the public. Closure notifications were posted on SMART's website and social media channels, and in local newspapers. During the San Rafael Station closure and 3rd Street construction work, SMART staff was positioned in strategic locations to assist passengers with a bus bridge and reinforce safety. The closure went smoothly, and Larkspur construction work continues to progress.

SMART recently partnered with the Petaluma Police Department and the Petaluma Policing Foundation to create a railroad public safety campaign. The campaign includes a short video that educates the community on safe practices near the railroad tracks, including crossing safety, trespassing awareness, and avoiding distractions. The video will be shown before movies at the Petaluma and Tiburon movie theaters. You can view the video on SMART's Facebook page: <https://www.facebook.com/sonomamarintrain/>.



MARKETING

Marketing Programs | Free Rides for Kids

This summer, kids under 18 can ride the train for free when accompanied by a paying adult. After the launch of the new summer program on May 25, weekend and holiday ridership has increased and many families are taking the opportunity to try the train for the first time. The outreach team got on board during weekends in June to engage with passengers and promote the summer campaign.

Digital Programs | Social Media

During the month of June, SMART's most popular Facebook post was the announcement of an additional late-night train run during the Marin County Fair. The additional run will depart northbound at 10:30 p.m. from the Marin Civic Center station, with stops at all stations, for each day of the fair that runs from July 3-7. Reactions on social media were overwhelmingly positive, with high levels of engagement. A printable train schedule for each day of the Marin County Fair can be found at <http://sonomamarintrain.org/Marin-County-Fair-2019>.

Sonoma-Marin Area Rail Transit
June 18 at 7:30 AM · 🌐

Leave the brake lights behind and take the SMART train to the [Marin County Fair](#)! A late-night train run will be added to accommodate fair-goers on the evenings of July 3-7, in partnership with the Marin County Fair. The additional train run will depart northbound from the Marin Civic Center Station at 10:30 p.m. on each of those nights, with stops at all SMART northbound stations, and arrive at the Sonoma County Airport Station at 11:31 p.m. To view the train schedule for each day, visit <http://sonomamarintrain.org/Marin-County-Fair-2019>.

SONOMA-MARIN SMART AREA RAIL TRANSIT

SPECIAL LATE-NIGHT RUNS DURING THE MARIN COUNTY FAIR

Schedule info at SonomaMarinTrain.org

OVER THE MOON MARIN COUNTY FAIR
Art + Agriculture + Community
July 3-7, 2019 marinfair.org

4,259 People Reached 415 Engagements [Boost Post](#)

👍❤️ 74 14 Comments 20 Shares

👍 Like 💬 Comment ➦ Share

Media | News Coverage

- June 19, *Bike-share system coming to SMART stations by next spring* (Santa Rosa Press Democrat)
- June 18, *PD Editorial: A win-win plan for Santa Rosa's West End neighborhood* (Santa Rosa Press Democrat)
- June 17, *Marin transportation funding clears another legal test* (Marin Independent Journal)
- June 14, *SMART station to open in Downtown Novato by end of 2019* (Patch.com)
- June 14, *5-car collision; hospital fire; new SMART station: Patch PM* (Patch.com)
- June 13, *Novato downtown to get full-time SMART station stop* (North Bay Business Journal)
- June 13, *Downtown SMART station expected to be opened by the end of the year* (SF Gate)
- June 13, *Tren SMART tendrá una estación y parada regular en el centro de Novato* (La Prensa Sonoma)
- June 12, *SMART to make downtown Novato a full-stop destination* (Marin Independent Journal)
- June 11, *Dick Spotswood: Possible SMART tax extension push is a risk* (Marin Independent Journal)
- June 8, *SMART TRAIN - Summer free weekends for kids* (Sonoma County Gazette)
- June 7, *SMART, BART receive Bay Area Metro Award* (Progressive Railroading)
- June 6, *First-ever Bay Area Metro Awards presented* (Cision PR Newswire)
- June 4, *Power outages hit Rohnert Park, delay SMART* (Santa Rosa Press Democrat)
- June 3, *Weekend 2 of street closures: SMART train construction* (Patch.com)
- June 3, *Monday Morning News Roundup* (SF Gate)
- June 3, *SMART extension continues* (KSRO)
- June 2, *Second weekend of rail-related street closures June 7-10* (SF Gate)
- June 2, *Exploring the Route of the North Pacific Coast Railroad: Early link between San Francisco, Marin, & Sonoma Counties* (Sonoma County Gazette)
- June 2, *Petaluma invests in trestle rehab study* (Petaluma Argus Courier)
- May 31, *San Rafael plans street closures for SMART train expansion* (KSRO)
- May 31, *In your town for May 31, 2019: Street closure set for train project* (Marin Independent Journal)
- May 30, *Street closings for SMART train construction* (Path.com)
- May 30, *Streets closing next two weekends for SMART train construction* (SF Gate)
- May 30, *San Rafael streets closed next 2 weekends for SMART train construction* (NBC Bay Area)
- May 29, *SMART to close San Rafael streets for construction linked to Larkspur station* (The Press Democrat)
- May 24, *Advisory: Road closures upcoming on second street in San Rafael* (Patch.com)

LARKSPUR EXTENSION PROJECT

- Track construction is wrapping up.
- The 2nd and 3rd Street crossings were successfully constructed at the beginning of June in downtown San Rafael.
- Work at the station consists of constructing the parking lot and installing station amenities.
- Construction of the City of San Rafael Multi Use Pathway from Rice Drive to Andersen Drive is nearly complete.
- Train control and communications systems installation work is ongoing with the installation of pedestrian gates, signal houses and signals.



Larkspur Station Construction



Larkspur Station – Track Construction



Track construction from Andersen Drive to Francisco Boulevard



2nd Street Grade Crossing – Track Work



2nd Street Grade Crossing Construction – Street Paving



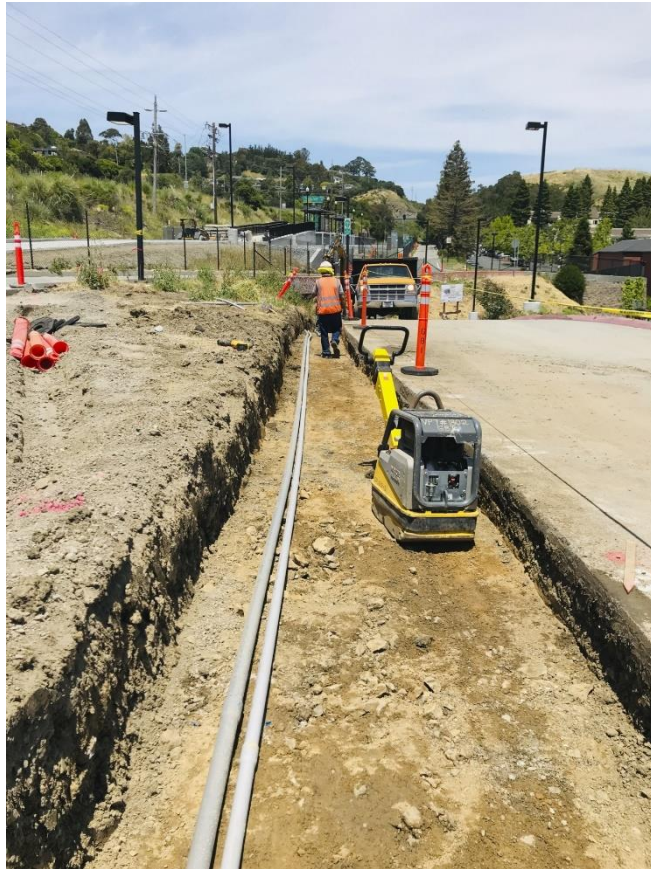
3rd Street Grade Crossing- Track Construction (night)



3rd Street Grade Crossing Construction – Street Paving



2nd Street Grade Crossing Construction – Installation of cantilever signal



Larkspur Station – Installation of Communication conduit work

WINDSOR EXTENSION PROJECT

- Preliminary engineering is complete.
- Environmental permit applications were submitted at the end of May.
- Project site walk with three qualified contractors conducted in early June.



Windsor Extension – site walk with the pre-qualified contractors

PATHWAY

Payran to Southpoint Multi-Use Pathway

Construction activities are started in June with site survey and site clearing.



Removal of fencing near Highway 101 south towards the Petaluma River

VEHICLE ENGINEERING

- SMART and Nippon Sharyo completed the final performance testing of the New Cars during night testing on Thursday June 13th.
- Cummins and Nippon Sharyo have completed 12 of the 18 engine modifications.
- Alstom continues work on DMU 110 repairs. During testing an issue with the auxiliary was detected. SMART and Alstom have been working together with assistance from Nippon Sharyo to resolve the issue.



SMART's wheel truing machine was delivered to the Rail Operations Center Friday June 14th and has been installed. Testing is planned to commence the week of June 24th.



OPERATIONS

MAINTENANCE OF WAY:

- Staff provided track protection for PG&E's vegetation contractor for two weeks.
- Our contractor abated vegetation in the track corridor between Civic Center and North San Pedro crossing. On June 29th they will abate the vegetation along the pathway in the same limits.
- We continue to provide Employee-In-Charge protection for the contractor installing underground conduit for the new Novato station and also boring new conduit for signal changes in downtown Santa Rosa.
- We have moved a herd of goats back onto our property north of Cal Park Tunnel adjacent to the 101 Freeway. They will take care of the most recent growth of brush and grass.
- Conducted railroad safety training for 25 Granite Construction employees who are building the Pathway between Southpoint and Payran.

TRANSPORTATION:

- Promoted an Engineer-Conductor to Controller/Supervisor.
- One Conductor was promoted (Certified) to Engineer-Conductor on June 5, 2019.
- Conducted interviews for Engineers-Conductors during the week of June 24th.
- Emergency Preparedness Training, Diesel Multiple Unit Emergency Evacuations Training using the window pulls, Transportation Division designed the new training aid and was built by Maintenance-of-Way staff located at the Rail Operations Center.



VEHICLE MAINTENANCE:

- Replaced two (2) damaged passenger flip seats in Diesel Multiple Unit 103. Seats were damaged from bicycles leaning against the seats.
- Repaired leaking waste tank valve on Diesel Multiple Unit 105.
- Side destination sign was inoperative on Diesel Multiple Unit 107. Inspected and replaced with a new sign and the defective sign was shipped out for warranty.
- Inspected close circuit television system and found two (2) cameras not online. Attempted to re-install cameras to network system but that did not work. Replaced network video recorder system and system worked properly.
- Performed mid-year maintenance on 1 Diesel Multiple Unit.
- Performed 500-hour oil change on 4 Diesel Multiple Units.
- Replaced engineer seat in Diesel Multiple Unit 101. The seat roller retainer broke which allows the seat to slide forward and backward. The seat was replaced and the defective seat was shipped out for warranty.
- Automatic Train Control maintenance performed on 10 Diesel Multiple Units. This maintenance keeps us compliant with Federal Regulatory Association regulations in regards to positive train control.
- Performed under car inspection on 10 Diesel Multiple Units.
- Performed engine swap, reverse gear replacement and transmission replacement on Diesel Multiple Units 109, 108, 112.
- Performed acceleration test on Diesel Multiple Units 115, 116, 117, 118.
- Arrival of wheel truing machine!!! Wheel Truing Machine has been placed into the pit and the hydraulic lines and electrical lines are currently being installed.
- Diesel Multiple Unit 108 after striking a wild turkey. The windshield was shattered.

FINANCE

On June 4, the Citizen’s Oversight Committee met and discussed the content and structure of the Strategic Plan. The Committee also discussed updating the membership and creating terms for the COC in the future. Finally, the Committee was presented with the new maps showing pathway progress. Attending the meeting were David Oster, Steve Birdlebough, Steve Rabinowitsh, Tanya Narath, Russ Colombo and Dennis Harter and SMART staff Erin, Bill, and Farha. The next meeting, which will review the full draft of the plan, will be held on August 15.



HUMAN RESOURCES

CURRENT OPEN RECRUITMENTS:

- Engineer-Conductor
- Controller Supervisor
- Administrative Analyst – Purchasing
- Signal Technician

INTERVIEWS:

- Controller Supervisor
- Engineer-Conductor

NEW HIRES:

One Laborer was hired on June 17, 2019 and one Senior Real Estate Officer on June 3, 2019.

LABOR CONTRACT NEGOTIATIONS:

Labor Negotiations with the International Association of Machinists and Aerospace Workers, Teamsters and SECA are ongoing. The current contracts are set to expire on June 30, 2019.

GRANTS, LEGISLATION, PLANNING AND REGIONAL ACTIVITIES

LEGISLATION

SB 742 (Allen): This legislation makes several changes to existing law related to operation of intercity rail feeder bus service. This SB 742 legislation would remove an existing restriction limiting intercity rail feeder bus service to passengers solely connecting to and from an Amtrak Intercity Rail service in California. In other words, currently people are only allowed to purchase a ticket on an Amtrak Thruway Intercity Rail feeder bus if they are also purchasing an Amtrak Intercity Rail ticket for the same journey. In the SMART corridor, the Amtrak Route 7 feeder bus travels between McKinleyville and Petaluma onward through Napa and Vallejo to Martinez at the Amtrak rail station. The SMART Board unanimously supported this bill and that support was communicated in a letter to the bill author on May 16, 2019. The bill passed from the Senate 37-0 and is currently in the Assembly.

REGIONAL AND LOCAL PLANNING ACTIVITIES

Regional Transportation Plan Update: The Metropolitan Transportation Commission has begun the process of updating the Regional Transportation Plan, currently named *Plan Bay Area 2040*. The updated financially constrained plan will be called *Plan Bay Area 2050*. MTC is also developing an unconstrained transportation vision plan called Horizon and has requested submittals of transit and roadway projects by June 30, 2019.

In conjunction with this regional plan update, each of the Congestion Management Agencies in the region are simultaneously updating their county-wide long-range plans. The Transportation Authority of Marin began reviewing a draft list of projects for submittal from Marin. The Sonoma County Transportation Authority has requested project sponsors submit projects to update their Countywide Plan and the regional plan at the same time, with submittals due to their staff by mid-June. That list of projects will subsequently be presented to their Board. As a multi-county transit district, SMART is asked to submit projects directly to MTC for the regional plan update after SMART Board review.

The SMART Board-approved list of Plan Bay Area 2050 projects has been transmitted to MTC and County Transportation Agency staff as of May 24.

State Route 37 Project: The Transportation Authority of Marin (TAM), Sonoma County Transportation Authority (SCTA), Napa County Transportation Planning Agency (NCTPA) and Solano Transportation Authority (STA) have entered into a memorandum of understanding (MOU) to continue to jointly study needed improvements to State Route (SR) 37. The most recent meeting was held on Thursday June 6th, 2019 in the SMART Board of Directors room and the topics discussed included the San Pablo Bay Active Transportation Access Study, restoration projects in San Pablo Bay, Solano Transportation Authority's Ferry feasibility study, SMART update on the Novato to Suisun City engineering feasibility study, and an ultimate environmental phase discussion. The next meeting is tentatively scheduled for Thursday September 5th, 2019 at a location to be determined.

Local Planning Department Notification and Coordination Tracking: SMART Planning staff tracks and reviews all notices sent by local jurisdictions for projects occurring adjacent to or nearby the railroad tracks. To date in 2019 staff has received and reviewed **90** different notices.

SYSTEM ACCESS PLANNING ACTIVITIES

Transit Coordination Meetings:

- June 5, 2019 - Staff attended the Metropolitan Transportation Commission (MTC) monthly Transit Finance Working group meeting.
- June 12, 2019 – Staff attended Sonoma County Transportation Authority’s monthly Transit Technical Advisory Committee meeting.
- June 26, 2019 – Staff attended the most recent meeting of the North Bay Transportation Officials at the Napa Valley Transportation Authority offices.

BICYCLE ACCESS AND PARKING

Bike Share: The Sonoma County Transportation Authority (SCTA) and Transportation Authority of Marin (TAM) submitted a joint application to the Metropolitan Transportation Commission (MTC) to receive a grant to create a bike share system in close proximity to the SMART stations. SCTA and TAM have been jointly managing this program, including the procurement process. An evaluation committee containing representatives from SCTA, TAM, SMART, and local jurisdictions met on Friday May 10 to review all eight proposals that were formally received by SCTA and TAM and to reach a consensus on which vendors to select for interviews. The committee reconvened on Friday, June 21, to interview the finalists and make a selection on which firm to proceed forward with in the creation of a Bike Share system in Sonoma and Marin Counties. Conservative estimates are that the program would launch by Spring 2020. SMART will continue to collaborate on program implementation moving forward.

BikeLink™ Lockers: – Staff is working with the locker vendor, BikeLink, to procure and install four additional bicycle locker parking spaces, one locker “quad”, at the Novato Hamilton station to accommodate unexpectedly high demand at that station. Installation occurred on June 20, 2019. Additionally, BikeLink is preparing to launch Clipper Card integrations with their lockers throughout the SMART system. Users will be able to enroll with BikeLink to use their existing Clipper Card to access bike lockers, instead of having to carry and use a separate BikeLink card. BikeLink launched this Clipper functionality on BikeLink lockers at SMART stations on Monday, July 15, 2019.

BUILD DISCRETIONARY TRANSPORTATION GRANTS:

The Federal Department of Transportation issued a Notice of Funding Availability for \$900 million in competitive BUILD Discretionary Transportation Grants with submittals due July 15, 2019. SMART submitted a request for \$15.9 million of BUILD funds for the Russian River Bridge Rehabilitation and Healdsburg Station project. Letters of Support have been received from the City of Cloverdale, the City of Healdsburg, the Town of Windsor, the County of Sonoma, the County of Marin, the Metropolitan Transportation Commission, the Sonoma County Transportation Authority, the Transportation Authority of Marin, SMART’s State legislators, and SMART’s Congressional delegation. Decisions on the program will be announced by November 12, 2019.

